

MONTHLY MEMBERSHIP PROGRESS REPORT

District 20 O

Results as of: 5/31/2025

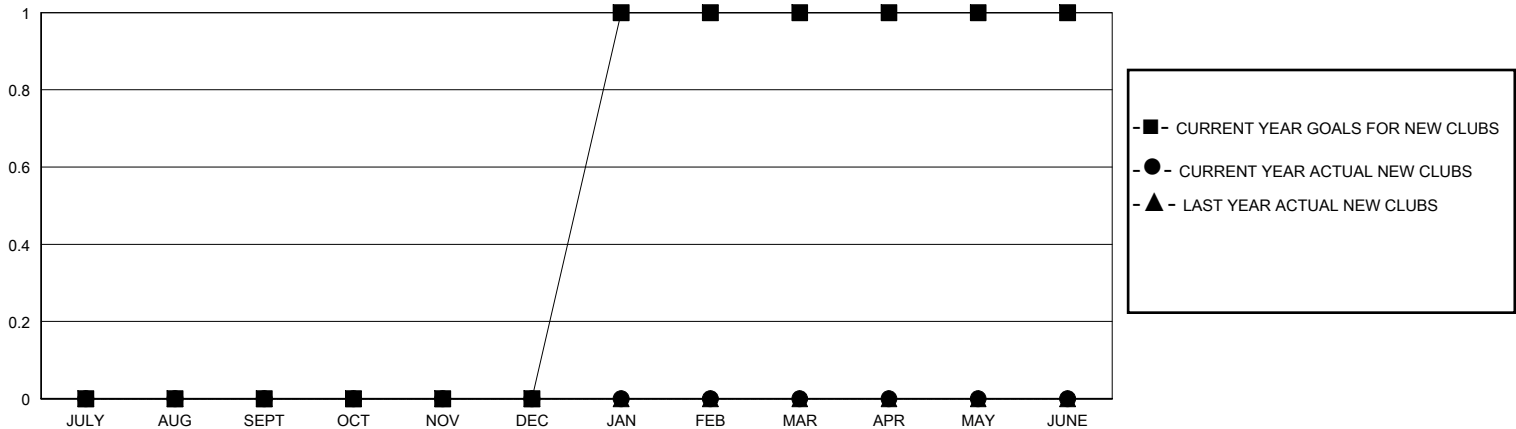
GMT:

LOCATION NEW YORK

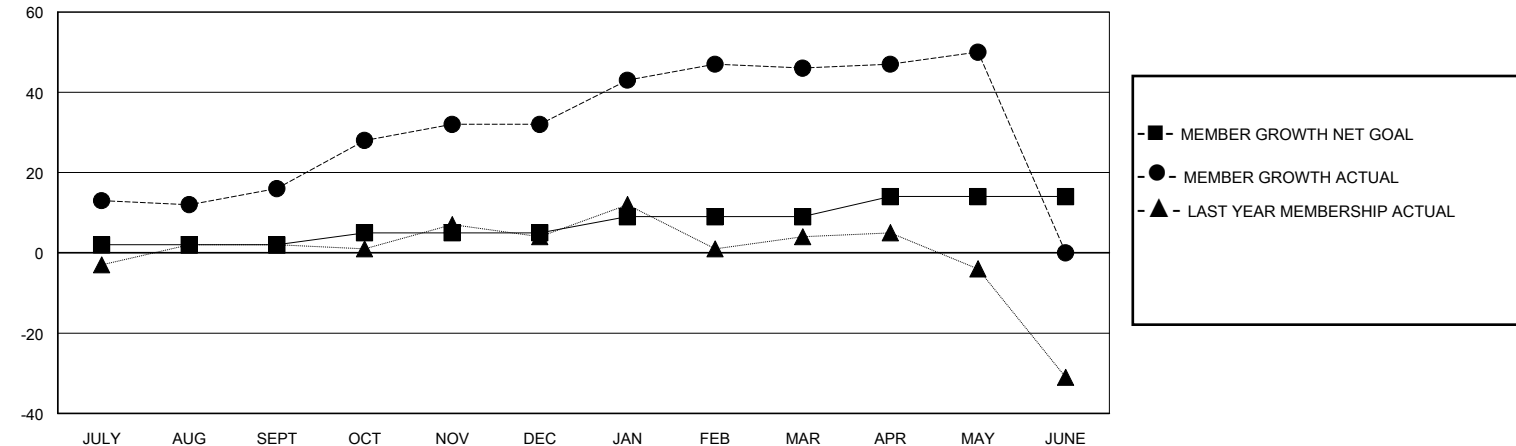
GMT CA

| Clubs                 |               |           |               | Members               |                        |                      |                                              |
|-----------------------|---------------|-----------|---------------|-----------------------|------------------------|----------------------|----------------------------------------------|
| RESULTS FOR 2024-2025 |               |           |               | RESULTS FOR 2024-2025 |                        |                      |                                              |
| QUARTER               | NEW CLUB GOAL | NEW CLUBS | DROPPED CLUBS | QUARTER               | MEMBER GROWTH NET GOAL | MEMBER GROWTH ACTUAL | DROPPED MEMBERS ACTUAL (including transfers) |
| JULY/AUG/SEPT         | 0             | 0         | 0             | JULY/AUG/SEPT         | 2                      | 51                   | 23                                           |
| OCT/NOV/DEC           | 0             | 0         | 0             | OCT/NOV/DEC           | 3                      | 26                   | 10                                           |
| JAN/FEB/MAR           | 1             | 0         | 0             | JAN/FEB/MAR           | 4                      | 53                   | 32                                           |
| APR/MAY/JUNE          | 0             | 0         | 0             | APR/MAY/JUNE          | 5                      | 27                   | 23                                           |

GOALS AND ACTUAL NEW CLUBS CUMULATIVE



GOALS AND ACTUAL MEMBERS CUMULATIVE



|                                                                                   |                                                           |                                                                        |
|-----------------------------------------------------------------------------------|-----------------------------------------------------------|------------------------------------------------------------------------|
| DROPPED CLUBS: 0                                                                  | 29 CLUBS OF 46 ADDED 1 OR MORE NEW MEMBERS                | <u>GENDER DISTRIBUTION</u><br>MALE 664 (54.52%)<br>FEMALE 554 (45.48%) |
| <u>DROPPED MEMBERS</u><br>DECEASED 17<br>CLUB CANCELLED 0<br>OTHER 70<br>TOTAL 87 | <a href="#">CLICK HERE FOR CUMULATIVE MEMBERSHIP DATA</a> | TOTAL FAMILY UNIT MEMBERS 271<br>FAMILY MEMBERS PAYING HALF DUES 140   |